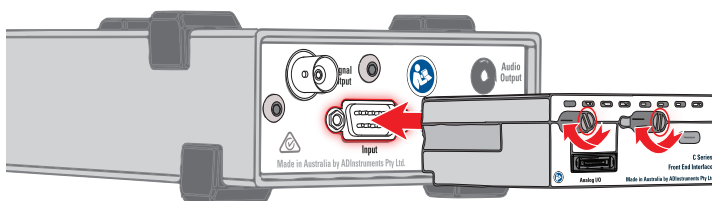


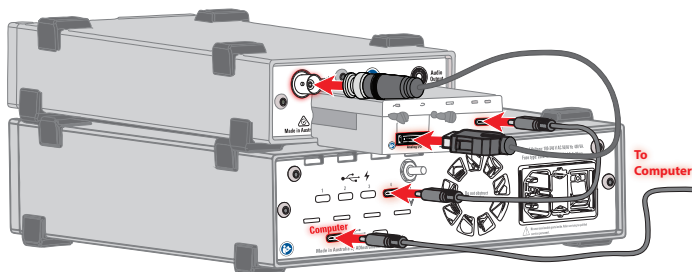


**The Front End Interface allows you to connect a traditional ADInstruments Front End to the PowerLab C. To get started:**

1. First connect the Front End Interface to the rear of your Front End and do up the screws



2. Next connect the included cable from the 'Analog IO' Port to the Analog Output port(s) on your Front End
3. Finally connect the USB-C Port on the Front End Interface into one of the downstream facing ports on the PowerLab C



4. Download and install the latest copy of LabChart or LabChart Lightning from [adstruments.com](http://adstruments.com)

For more information, including how to use Front End Interface without a PowerLab C, refer to the full Owners Guide at [adi.to/powerlabstart](http://adi.to/powerlabstart).